

36°N

# 2009

## COMMUNITY STATUS REPORT

34°N

32°N

30°N

28°N

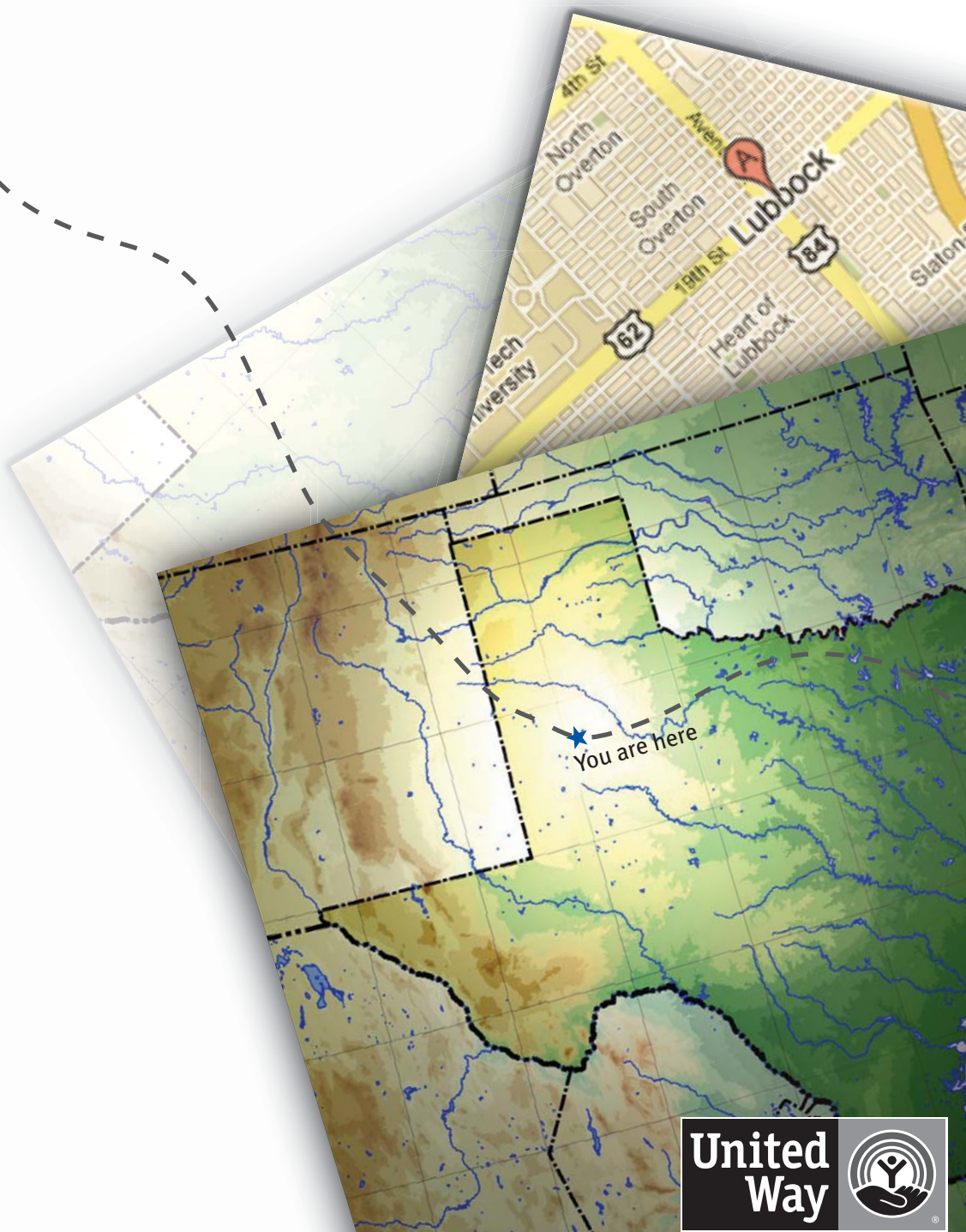
26°N

24°N

22°N

20°N

18°N



108° W ★ 106° W ★ 104° W ★ 102° W ★ 100° W ★ 98° W ★ 96° W ★ 94° W ★ 92° W



★ 98° W ★ 96° W ★ 94° W ★ 92° W



Look for this box throughout this report for additional statistics and facts.

★ **LEGEND** ★

# TABLE OF CONTENTS

<b>CHANGING A COMMUNITY</b>	1
WHAT WORKS?	
WHAT DOES NOT WORK?	
<b>INTRODUCING THE SCORECARD</b>	2
<b>FROM THE SCORECARD</b>	3
LOW BIRTH WEIGHT BABIES	
PRENATAL CARE	
<b>FROM THE SCORECARD</b>	4
GRADE RETENTION PERCENTAGE OF CHILDREN IN KINDERGARTEN/1 <sup>ST</sup> GRADE	
<b>MORE ABOUT CHILDREN ON THE SOUTH PLAINS</b>	5
<b>CHILDREN IN TEXAS</b>	
SOME QUICK FACTS	
<b>FROM THE SCORECARD</b>	6
HIGH SCHOOL GRADUATION RATES	
<b>FROM THE SCORECARD</b>	7
PERCENT OF STUDENTS AT AN 11 <sup>TH</sup> GRADE READING COMPREHENSION LEVEL	
<b>THE ISSUE OF HIGH SCHOOL DROPOUTS</b>	8
SOME QUICK FACTS	
<b>FROM THE SCORECARD</b>	
PERCENT OF STUDENTS AT OR ABOVE CRITERION IN COLLEGE ENTRANCE EXAMS (REGION 17 ESC)	
<b>FROM THE SCORECARD</b>	9
PERCENT OF ADULTS WITH A HIGH SCHOOL DIPLOMA	
<b>MORE ABOUT THE LUBBOCK AREA</b>	10
<b>THE CASE FOR EDUCATION</b>	12
STATE AND NATIONAL FACTS AND STATISTICS	
<b>MORE INFORMATION</b>	13
ADDITIONAL FACTS AND STATISTICS	
<b>APPENDIX</b>	14

36°N

## THE 2009 COMMUNITY STATUS REPORT

Each year, the Community Status Report serves as a road map of the community's status and needs. The information contained in the report has been critical to guiding United Way, its supporters and its partners in the continued progress to help better the community.

It is difficult, if not impossible to know with complete certainty that correct decisions are being made concerning funding and the provision of services. However, the Community Status Report is helping numerous organizations make better funding decisions by providing a clearer picture of overall community needs. In order to develop this picture, and determine the best course, various factors or indicators are compiled each year in the report.

This year the format of the Community Status Report has changed. On the Lubbock Area United Way web site, there is a section containing tabs for all new and archived community status data. This includes information relating to demographics, economics, education, health and public safety. The intent is that this format will allow for easier navigation and access for the user. This information can be accessed at [http://liveunitedlubbock.org/commstatus\\_new.shtml](http://liveunitedlubbock.org/commstatus_new.shtml)

This printed report focuses on information at the local level and introduces Lubbock Area United Way's Scorecard. This scorecard is built around The Education Matters Initiative. It is used for analyzing select indicators and measuring United Way's and its partners' community impact efforts.

34°N

32°N

30°N

28°N

26°N

24°N

22°N

20°N

## THE EDUCATION MATTERS INITIATIVE

Lubbock Area United Way and supporters work to address the root causes of issues and create lasting positive change.

Key to our work are the 22 Community Partner agencies and the Education Matters Initiative. The initiative focuses on creating opportunities for people at every stage of life.

The Education Matters Initiative includes:

United Way

**SUCCESS BY 6™ Healthy Start, Ready for School**

Children who enter kindergarten healthy and ready to learn have a much greater chance of being successful in school.

United Way  
**SUCCESS**  
in school 

**Stay on Track, Finish on Track**

Success In School connects young people with the resources they need to graduate from high school and move on to a bright future.

United Way

**SUCCESS for life Literacy and Job Skills**

Success For Life creates opportunities for adults to gain the literacy and job skills they need to work and live independently.

To see the complete Education Matters Initiative booklet, visit us on-line at <http://liveunitedlubbock.org/Edmatters.shtml>

# CHANGING A COMMUNITY

INVESTING MORE MONEY IN STRATEGIES THAT PREVENT FUTURE PROBLEMS

# WHAT WORKS?

INVESTING MONEY IN PREVENTATIVE AND PRO-ACTIVE STRATEGIES

- Early prenatal care
- Early intervention
- Good parenting
- Early learning
- Prevention
- Education
- Awareness
- Advocacy

- Access to health care
- Safe places for children and youth
- Positive Behavior Support
- Case management
- Community involvement

- Building skills and self confidence
- Mentoring
- Avoiding risky behavior
- Volunteering
- Connecting to resources
- Reporting crimes

# WHAT DOES NOT WORK?

SPENDING MONEY LATER RATHER THAN SOONER

## TEXAS

Nearly 75% of state inmates have not completed high school. *(United Way of America Goals for the Common Good)*

One in 22 adults in Texas is under correctional control (jail, prison, parole or probation), costing \$2.96 billion in 2008. *(The PEW Research Center)*

## NATION

The U.S. has 5% of the world's population, but 25% of the world's prison population. *(Office of US Senator Jim Webb)*

2.38 million Americans are in prison – five times the world's average incarceration rate. *(Office of US Senator Jim Webb)*

Mass incarceration of illegal drug users has not curtailed drug usage. The multi-billion dollar illegal drugs industry remains intact, with more dangerous drugs continuing to reach our streets. *(Office of US Senator Jim Webb)*

The Justice Department estimates that 16% of the adult inmates in American prisons – more than 350,000 of those incarcerated – suffer from mental illness; the percentage in juvenile custody is even higher. *(Office of US Senator Jim Webb)*

Incarcerating non-violent mentally ill persons and drug addicts only perpetuates problems when they are released - untreated, unprepared, and unsupported.

For the first time in history more than one in every 100 adults in America are in jail or prison – a fact that significantly impacts state budgets without delivering a clear return on public safety. *(The PEW Research Center)*

36°N

34°N

32°N

30°N

28°N

26°N

24°N

22°N

20°N

# INTRODUCING THE SCORECARD

Lubbock Area United Way is committed to data-driven planning, evaluating results, using best practices and implementing proven strategies.

The “Scorecard” was developed to help measure six outcomes for The Education Matters Initiative. While it is relatively easy to measure whether babies are born healthy or individuals attain certain levels of education, other outcomes may not have such definitive indicators.

For example, even the definition of a high school dropout is not always the same, and consequently, there is little agreement about how to accurately measure dropout rates. However, when researchers look at even the lower estimates, the rates are too high.

As stated in last year’s report, early reading assessments are required for all students attending public school in Texas in Kindergarten and grades 1 and 2. The results of the assessments are not published at this time. Lubbock Area United Way will continue to track progress with the available indicators, adding additional indicators as possible.

# THE SCORECARD

## BASED ON THE EDUCATION MATTERS INITIATIVE

### SUCCESS BY 6

*Preparing children to enter kindergarten ready to learn*

Outcome: Babies are born healthy

INDICATOR: PERCENT OF LOW BIRTH WEIGHT BABIES

Outcome: Children are prepared to enter kindergarten ready to learn

INDICATOR: GRADE RETENTION PERCENTAGE OF CHILDREN IN KINDERGARTEN/1<sup>ST</sup> GRADE

### SUCCESS IN SCHOOL

*Helping students graduate prepared to work and/or further education*

Outcome: Students graduate from high school

INDICATOR: PERCENT OF PUBLIC HIGH SCHOOL STUDENTS WHO GRADUATE ON TIME

Outcome: Students are prepared for college and/or work

INDICATOR: PERCENT AT 11<sup>TH</sup> GRADE LEVEL IN READING COMPREHENSION

### SUCCESS FOR LIFE

*Assisting adults in attaining education and job skills*

Outcome: Adults have literacy and job skills needed to work and/or further education

INDICATOR: PERCENT OF ADULTS WITH A HIGH SCHOOL DIPLOMA

Outcome: Adults make a successful transition from high school to higher education

INDICATOR: PERCENT OF STUDENTS AT OR ABOVE CRITERION IN COLLEGE ENTRANCE EXAMS

# FROM THE SCORECARD

## LOW BIRTH WEIGHT BABIES

DESIRED OUTCOME: BABIES ARE BORN HEALTHY

Birth weight is the strongest predictor of infant survival or mortality. Low and very low birth weight often results in an elevated risk of disabilities or developmental delays.

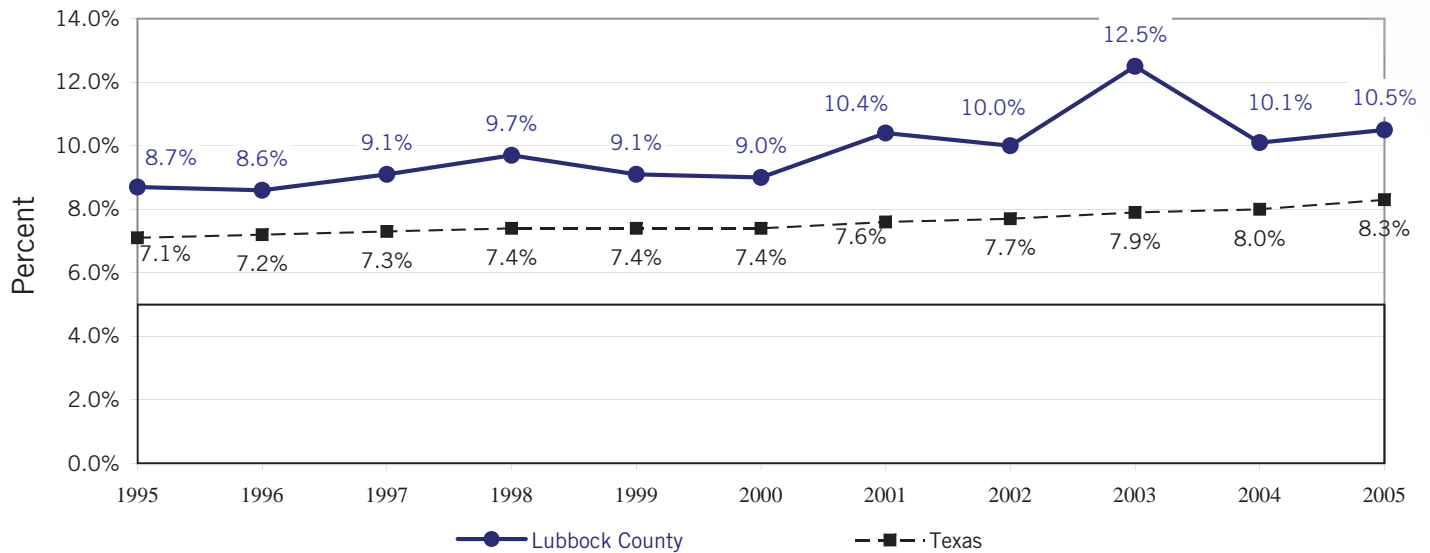
In Lubbock County the number of low birth weight babies from 1995 to 2005 has increased from 8.7% to 10.5% which is 26% higher than the Texas rate of 8.3%. (See chart below)

### Low Birth Weight Babies

Lubbock County residents/Texas residents

Texas Department of State Health Services

Definition: Live-born Infants Weighing Less Than 2,500 Grams (Around 5.5 lbs) at Birth



### PRENATAL CARE

Low birth weight and infant mortality can both be reduced with adequate prenatal care. (Wang PreNatal Study)

In 2005 in Lubbock County, 35% of pregnant women did not receive pre-natal care during the first tri-mester. (Texas Department of State Health Services- TDSHS)

# FROM THE SCORECARD

## GRADE RETENTION PERCENTAGE OF CHILDREN IN KINDERGARTEN/1<sup>ST</sup> GRADE\*

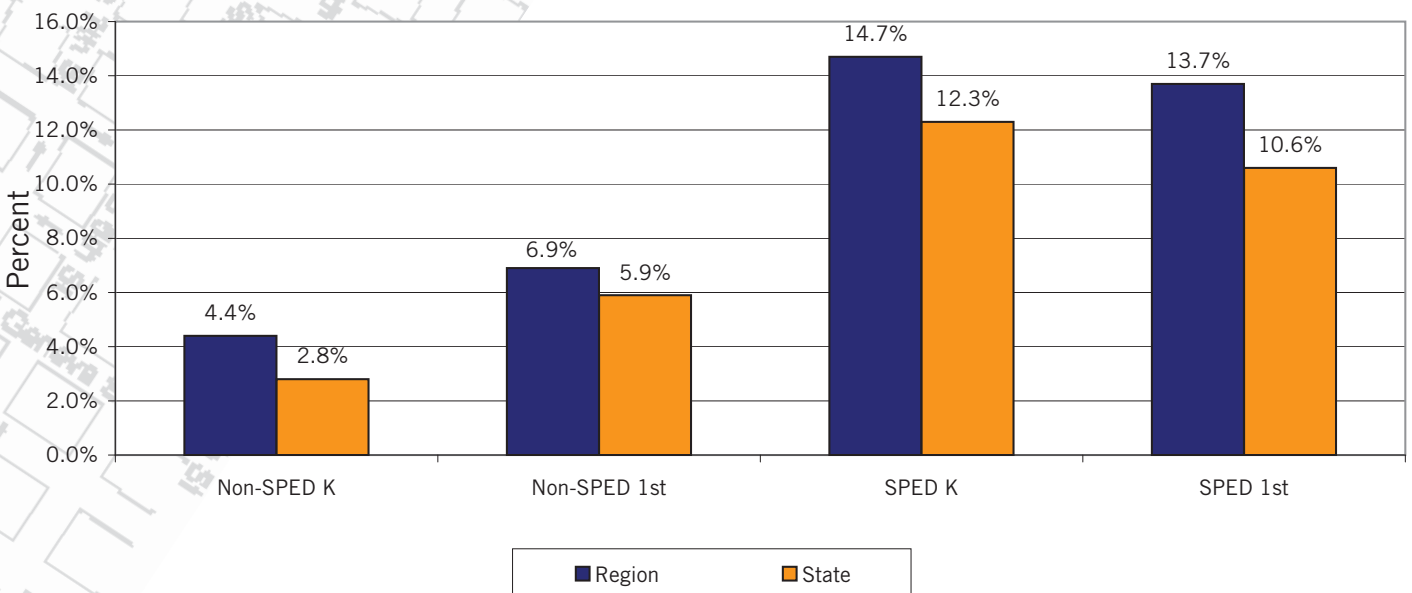
*\*The retention rate reported by the Texas Education Agency is an annual rate that shows the percentage of students who, in the fall of a given school year, were enrolled in the same grade level as reported for the last six-week period of attendance in the previous year.*

**DESIRED OUTCOME: CHILDREN ARE PREPARED TO ENTER KINDERGARTEN READY TO LEARN**

The chart below shows percentages of grade retention for Special Education (SPED) and Non-Special Education (Non-SPED) kindergarten and 1<sup>st</sup> grade students. These statistics pertain to Education Service Center, Region 17 during 2007-2008.

**Education Service Center Region 17  
Retention Rates, 2007-2008**

<http://www.tea.state.tx.us/perfreport/aeis/>





# MORE ABOUT CHILDREN ON THE SOUTH PLAINS

## **Infant Mortality**

The Lubbock County infant death rate is 28% above the state rate. (TDSHS)

## **Child Abuse**

In 2007, the rate of confirmed victims of child abuse in Lubbock County was 120% above the state rate. (Texas Department of Family and Protective Services- TDFPS)

In 2008, Children's Protective Services served 762 children in foster care in Lubbock County. The number of children in foster care in Texas was 31,058. (TDFPS)

## **Teen Mothers**

The percentage of adolescent mothers (ages 17 years and younger) in Lubbock County decreased from 1995 to 2005, although it remains above the Texas rate. (TDSHS)

In 2005 Dawson County had the highest teen pregnancy rate in the state, with 90.3 births per 1,000 females ages 15 to 17. (Statewide teen births 2005)

In Health Service Region 1 (Lubbock and 20 other counties) 69% of teen mothers were Hispanic, and 12% were repeat births. (Region 1 teen births 2005)

## **Poverty**

In 2007, 20% of Lubbock County children live in poverty. This percentage is down from the previous year, but still remains above the U.S. percentage of 11%. (United States Census)

In the Region 17 Education Service Center, 58.2% of students were enrolled in the free or reduced lunch program. (Texas Education Agency)

In 2008 Children's Advocacy Center of the South Plains (CAC) interviewed 1,216 children. These interviews are conducted by specialized forensic interviewers who talk to children in a non-threatening environment and determine whether or not abuse has occurred. In Lubbock County alone, there were 159 CAC cases presented to the Criminal District Attorney's office.

CASA (Court Appointed Special Advocates) of the South Plains served 901 foster care children in six counties in 2008, and were able to help 249 children find permanency.



## CHILDREN IN TEXAS

According to [www.texanscareforchildren.org/childrenscampaign2009](http://www.texanscareforchildren.org/childrenscampaign2009):

Texas:

grade retention of children in kindergarten is up 32% this decade, suggesting a growing problem with school readiness

continues to rank 50<sup>th</sup> out of 50 among the states in health coverage for children

has one of the country's highest rates of births to teenage mothers

has more children growing up to be adults in the correctional system than any other state

still ranks near the bottom in child hunger, child poverty, and child deaths from abuse or neglect

continues to see a steady climb in infant mortality rates this decade, while those rates remain unchanged in the nation as a whole

Children in Texas are the most likely in the United States to not complete high school by the age of 25.

Where the state has invested in improving indicators – such as childhood vaccination rates and child support collection – the state's ranking has improved dramatically in just five years.

# FROM THE SCORECARD

## HIGH SCHOOL GRADUATION RATES

### DESIRED OUTCOME: STUDENTS GRADUATE FROM HIGH SCHOOL

The single most important factor in the determination of income, self-sufficiency, and well-being is educational attainment.

There are over 77,000 students in the Region 17 Education Service Center area and approximately 35,000 are considered at-risk.

In the Region 17 (ESC) from 2007 to 2008:

- Graduation rates fell from 85.9% to 81%
- The 4-year dropout rate increased from 7.9% to 12.3% (see chart below)

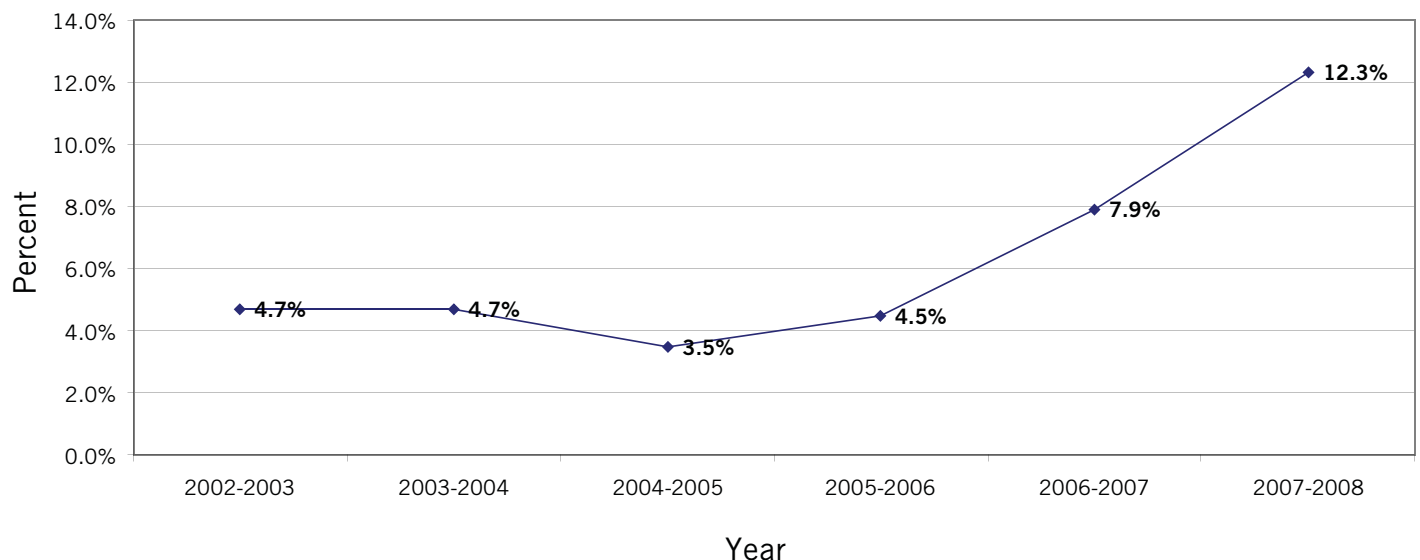
ESC Region 17 is one of twenty regional service organizations that were created by actions of the Texas Legislature and the Texas State Board of Education in 1967. The centers are non-regulatory and each provides an array of services to support school administration and instruction. District participation in services is voluntary. The Region 17 Education Service Center's purpose is to serve school districts as defined in three directives:

- To facilitate increasing student performance
- To enable school districts to operate more efficiently and economically
- To implement state education initiatives



### Education Service Center Region 17 Drop Out (4-year)

<http://www.tea.state.tx.us/perfreport/aeis/>



# FROM THE SCORECARD

## PERCENT OF STUDENTS AT AN 11<sup>TH</sup> GRADE READING COMPREHENSION LEVEL

**DESIRED OUTCOME: STUDENTS ARE PREPARED FOR COLLEGE AND/OR WORK**

From 2007 to 2008, in the Education Service Center Region 17:

- The percentage of students passing all TAKS tests increased by 2.9% to 72%
- Percentage of students passing 11th Grade TAKS English Language Arts remained the same, 90%, which is 1% below Texas state-wide rate.



### ESC REGION 17 SCHOOL DISTRICTS

- |                             |                         |
|-----------------------------|-------------------------|
| Abernathy ISD               | O'Donnell ISD           |
| Amherst ISD                 | Olton ISD               |
| Anton ISD                   | Paducah ISD             |
| Borden County ISD           | Patton Springs ISD      |
| Brownfield ISD              | Petersburg ISD          |
| Canyon Lakes Charter School | Plains ISD              |
| Cotton Center ISD           | Plainview ISD           |
| Crosbyton ISD               | Post ISD                |
| Dawson ISD                  | Premier High School     |
| Denver City ISD             | Ralls ISD               |
| Floydada ISD                | Richard Milburn Academy |
| Frenship ISD                | Rise Academy            |
| Guthrie CSD                 | Roosevelt ISD           |
| Hale Center ISD             | Ropes ISD               |
| Harmony Science Academy     | Sands CISD              |
| Idalou ISD                  | Seagraves ISD           |
| Jayton-Girard ISD           | Seminole ISD            |
| Klondike ISD                | Shallowater ISD         |
| Lamesa ISD ★                | Slaton ISD              |
| Levelland ISD               | Smyer ISD               |
| Littlefield ISD             | South Plains Academy    |
| Lockney ISD                 | Southland ISD           |
| Loop ISD                    | Springlake-Earth ISD    |
| Lorenzo ISD                 | Spur ISD                |
| Lubbock ISD                 | Sudan ISD               |
| Lubbock-Cooper ISD          | Sundown ISD             |
| Meadow ISD                  | Tahoka ISD              |
| Morton ISD                  | Wellman-Union CISD      |
| Motley County ISD           | Whiteface CISD          |
| Muleshoe ISD                | Whitharral ISD          |
| New Deal ISD                | Wilson ISD              |
| New Home ISD                |                         |



# THE ISSUE OF HIGH SCHOOL DROPOUTS

## SOME QUICK FACTS

One in three students will drop out of school in Texas. *(Communities In Schools)*

Two-thirds of state and local prisoners are dropouts. It costs approximately \$20,000 per year to maintain a state prisoner. In terms of education, it cost approximately \$7,900 per year to educate a student from kindergarten to graduation. *(Communities In Schools)*

A high school dropout is four times more likely to be unemployed than a college graduate. *(Texas State Data Center & Office of the State Demographer- Murdock)*

Dropouts make up nearly half the heads of households on welfare. *(Communities In Schools)*

Over their lifetimes, dropouts from the class of 2007 alone will cost our nation more than 300 billion dollars in lost wages, lost taxes and lost productivity. *(Former U.S. Secretary of Education Margaret Spellings)*

According to the *Executive Summary: Findings from the Evaluation of Communities In Schools in Texas*, the Communities In Schools model provides solutions to keeping at-risk students in school and ultimately reducing the incidence of dropping out of school.

From 2004 to May 2009 CIS of the South Plains has helped over 5,500 students stay in school and prepare for life through case-managed services.



## FROM THE SCORECARD

PERCENT OF STUDENTS AT OR ABOVE CRITERION IN COLLEGE ENTRANCE EXAMS (REGION 17 ESC)

DESIRED OUTCOME: ADULTS MAKE A SUCCESSFUL TRANSITION FROM HIGH SCHOOL TO HIGHER EDUCATION

25.8% of students met or scored above criterion in college entrance exams. *(See chart to the right)*

# FROM THE SCORECARD

## PERCENT OF ADULTS WITH A HIGH SCHOOL DIPLOMA

**DESIRED OUTCOME: ADULTS HAVE LITERACY AND JOB SKILLS NEEDED TO WORK AND/OR FURTHER EDUCATION**

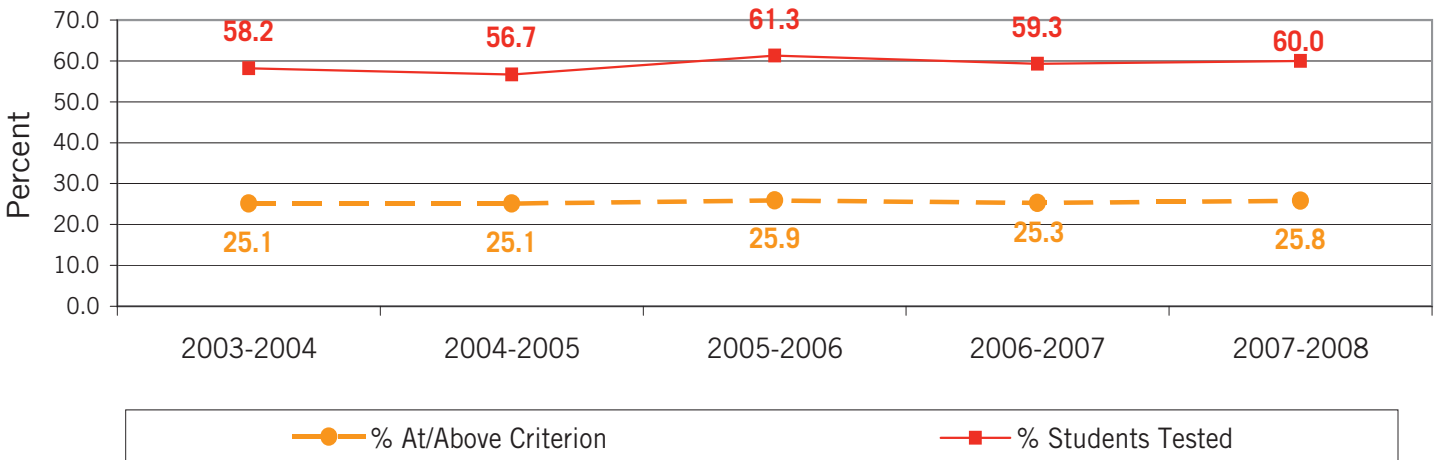
The more education people have, the more lifetime earnings they can expect.

The percentage of adults 25 years and older in Lubbock County who did not have a high school diploma improved from 18% in 2006 to 16% in 2007. *(United States Census)*

16.4% of Lubbock County adults live in poverty. This is down from the previous year, but is still above the U.S. percentage. *(United States Census)*

### Region 17 Percentage Taking College Entrance Exams and Percentage "At or Above Criterion" (SAT > 1110 or ACT > 24)

<http://www.tea.state.tx.us/perfreport/aeis/>



# MORE ABOUT THE LUBBOCK AREA

## Population

Lubbock County continues moderate growth from 242,628 in 2000 to a projected 261,030 in 2010. However, many surrounding rural counties are losing population.\*

The number of Hispanic residents in the City of Lubbock will continue to grow from approximately 27% in 2000 to over 38% by 2020, and over 48% by 2040.\*

Anglos comprised 63% of Lubbock County's population in 2000. It is estimated that they will be 50% of the population in 2020 and 42.8% of the population in 2030.\*

## Age

In 2000 Lubbock's median age was 30 years old as compared to 35 years old in the U.S.\*

*\* (Wang and City of Lubbock Planning, 2002)*

## Economy

To see up-to-date local economic information see [http://dev.lubbocknational.com/files/lnb/pdfs/news\\_36\\_COL\\_LEI\\_February\\_2008.pdf](http://dev.lubbocknational.com/files/lnb/pdfs/news_36_COL_LEI_February_2008.pdf) (*Lubbock Economic Index*)

## Literacy and Language

The Texas Center for the Advancement of Literacy & Learning estimates that in 2003 approximately 13% of Lubbock County residents were functionally illiterate\* and Texas averaged 19%. \*defined as someone who is unable to read well enough to fill out a job application, read a newspaper or make out a grocery list.

In Lubbock County 5.4% of the population 16 years and older not in the labor force speak English less than "very well". (*United States Census*)

## Health

Heart disease remains the leading cause of death in Lubbock County. (*dshsLubbock05*)

In Lubbock County the percentage of obese individuals increased to 38% in 2007. (*DSHS\_Fonseca\_leadingHealthIndicators excerpt*)

Deaths resulting from diabetes, the 7th leading cause of death in Lubbock County, continue to increase. (*TDSHS*)

The Lubbock Rape Crisis Center provided services for 327 sexual assault victims and their family members in 2008. 20 of these assault victim's were males.

Women's Protective Services served 3,419 area women and children in 2008.

## Health- continued

Gonorrhea and Chlamydia rates in Lubbock County remain higher than the state rate. (*TDSHS*)

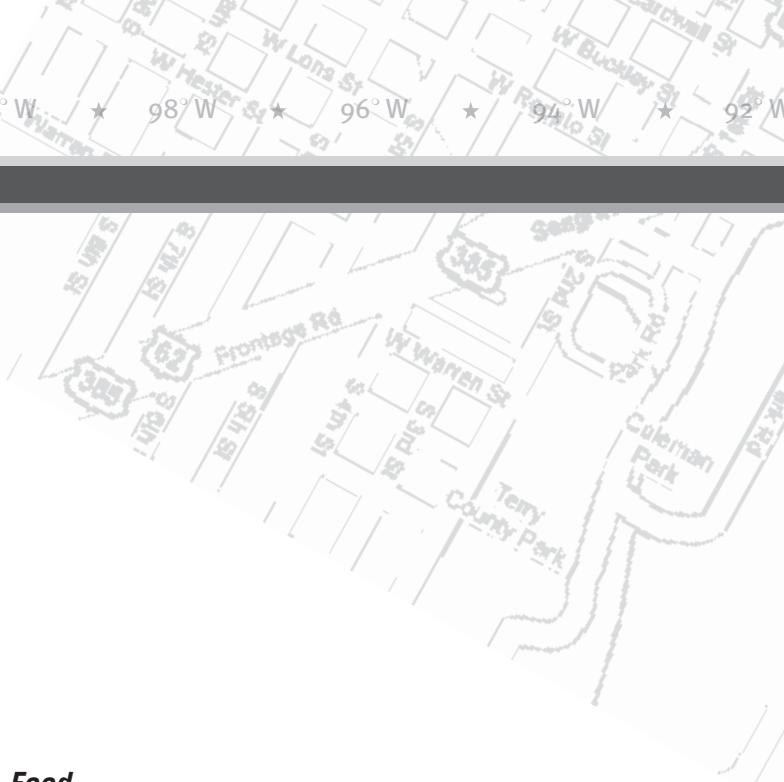
In 2007 24.8% of persons in Lubbock County did not have health insurance. (<http://covertheuninsured.org>)

## Community Safety

Lubbock County's reported rape rate is 44% above the state rate. (*Uniform Crime Reporting System- UCRS*)

Lubbock County's family violence rate is 90% above the state rate. (*UCRS*)

In 2007 Lubbock County's rate of aggravated assault was 52% above the state rate. (*UCRS*)



As many statistics as there are, they often don't tell the whole story. Some indicators may not be available on a local level, if at all. For this reason, Lubbock Area United Way convenes area experts from the field to help assess needs and develop strategies.

The South Plains area has many resources, but there are also many barriers for people who need to access them. Barriers include lack of health insurance, transportation, education, language and literacy skills, the cost and/or lack of short-term vocational education below the college level, and of course poverty, abuse, and neglect.

**Food**

The South Plains Food Bank has seen a 25% increase in the number of people needing food assistance. The Food Bank is seeing people who have never been to the Food Bank before but are now turning to them for help. At the same time, the amount of donated food has decreased.

**Homelessness**

The South Plains Homeless Consortium counted approximately 600 individuals living on the streets in Lubbock. Many more homeless families stay with relatives, friends and spend nights in motels. During 2008 Family Promise had 1100 inquiries beyond the 25 families that they were able to serve. The Salvation Army provided over 5000 nights of shelter to individuals.

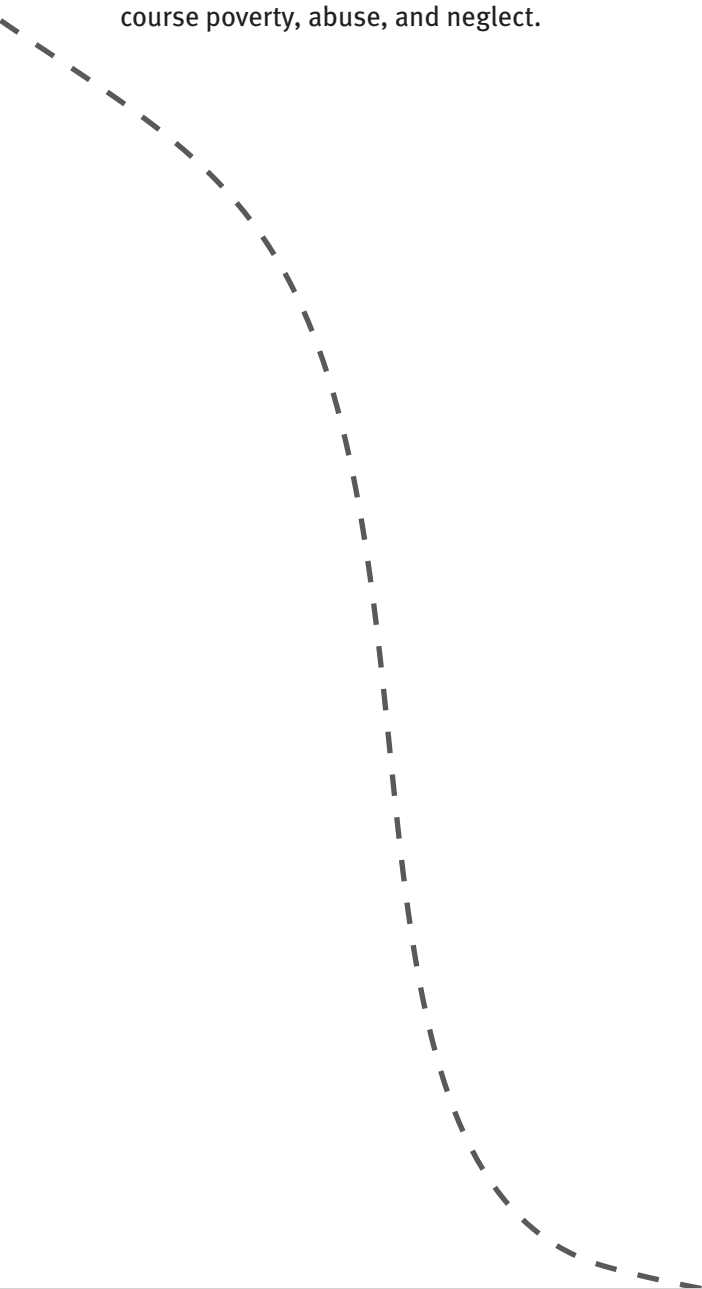
2-1-1 Texas of the South Plains reported during the past 12 months the top un-met needs were for food vouchers (580), electric bill assistance (346), rent bill assistance (223) and gas money (162).

**Childcare**

It is difficult to know the whole story about affordable childcare. Childcare professionals know that many children are at home alone or with older siblings after school; that relatives are providing child care; and that the lack of available child care makes it harder for parents to work and causes many to miss work when children are sick.

**Mental Health**

Mental health resources are hard to access, particularly without health insurance, and in many cases, not available at all, especially for adolescents and young adults with drug or alcohol abuse problems. Early prevention and intervention can decrease the number of youth who end up in the juvenile and prison systems.



# THE CASE FOR EDUCATION

## STATE AND NATIONAL FACTS AND STATISTICS

On a national level, the impact of education is evident. According to *United Way of America's Goals for the Common Good*:

### **Life expectancy**

On average, the more education people have, the longer they live.

### **Murder**

A one-year increase in the average level of schooling in a community is associated with a 30% decrease in the murder rate.

### **Obesity**

Obesity has increased among all Americans, yet the more educated are less likely to be overweight or obese.

### **Income**

The median annual earnings of Americans 25 and older who did not complete high school are less than \$18,500, while those who completed high school typically earn early \$26,000. College graduates earn \$44,000 annually, and those with graduate or professional degrees typically earn \$57,500.

### **Poverty**

Education is the single most important factor in the determination of a person's poverty status: almost 24% of the adult population without a high school diploma is poor, compared to 11% of those who are high school graduates and only 3.6% of college graduates.

### **Unemployment**

A high school dropout is four times more likely to be unemployed than a college graduate.

### **Children's reading proficiency**

Among eighth graders whose parents have less than a high school education, 13% read proficiently (beyond a basic level), compared with 42% of their classmates whose parents have a college degree.

### **Incarceration**

Nearly three-quarters of state inmates did not complete high school; fewer than 3% completed college or more.

Texas ranks last (50<sup>th</sup>) among states in the percentage of citizens age 25 and older who have a high school diploma or GED.





# MORE INFORMATION

## ADDITIONAL FACTS AND STATISTICS

### Education

Nationally, more than 40% of Hispanics over 25 did not complete high school (*US Census Bureau*)

### Literacy and Language

People with low socioeconomic status, immigrants, high school dropouts, and the unemployed have higher rates of functional illiteracy than the average adult (*Matthew Quirk Ph.D., 2000*).

In the last decade, the Texas workforce has radically changed as workers with limited English proficiency have become the fastest-growing segment of the workforce.

*The U.S. Office of Technology* has estimated that 25% of the adult workforce does not read well enough to meet routine requirements of today's workplace.

Texas has 6.5 million residents, 38.6% of the population, who speak a language other than English at home, almost double the national percentage. (*Texas LEARNS, 2005*)

### Age

As with the rest of the United States, Texas' population is aging as a result of increased longevity and the aging of the baby-boom generation (those persons born between 1946 and 1964). (*Murdock*)

By 2040, it is projected that Hispanics will comprise at least 1/2 of all age groups younger than 65, and about 2/3 of all age groups younger than 40. (*Murdock*)

### Income

Because of demographic changes, it is projected that between 2000 and 2040, average household income in Texas will decrease from \$54,441 to \$47,883 (in 2000 dollars). (*Murdock*)

### Health

Poverty, lower education and lack of health insurance are correlated with poorer health outcomes.

The failure to address behavioral health issues such as obesity, lack of exercise, alcohol and drug abuse, results in preventable death and disability. It reduces workforce productivity, quality of life, affects student success in school, costs taxpayers and overloads government programs and agencies. It increases homelessness and poverty.

The top three causes of death claim fewer lives in the U.S. every year, continuing their long-term downward trend – heart disease since 1980, cancer since 1993, and stroke since 1958 (Heron et al, 2009) However the sharp spike in obesity threatens to erode century-long gains in life expectancy. (*United Way of America Goals for the Common Good*)

Dietary factors are associated with 4 of the 10 leading causes of death.

### Safety

1 in every 6 women in America will be a victim of sexual assault. (*National RAINN [Rape, Abuse and Incest Network]*)

Only 6% of rapists will ever spend a day in jail. (*National RAINN [Rape, Abuse and Incest Network]*)

1 out of 3 women in the United States will be physically abused sometime in their life. (*ncdv.org*)

# APPENDIX 2009

On the Lubbock Area United Way web site, there is a section containing tabs for all new and archived data from the Community Status Report. This includes information relating to demographics, economics, education, health and public safety. The intent is that this format will allow for easier navigation and access for the user. This information can be accessed at [http://liveunitedlubbock.org/commstatus\\_new.shtml](http://liveunitedlubbock.org/commstatus_new.shtml)

Below is a partial list of sources used for this report and additional resources that can also be found at [http://liveunitedlubbock.org/commstatus\\_new.shtml](http://liveunitedlubbock.org/commstatus_new.shtml)

- *Texas Department of State Health Services- TDSHS*
- *Texas Department of Protective & Regulatory Services- TDPRS*
- *Texas Department of Family & Protective Services- TDFPS*
- *Uniform Crime Reporting System- UCRS*
- *Texas State Data Center & Office of the State Demographer- MURDOCK*

## Additional Resources

### CHILDREN

- *America's Children in Brief: Key National Indicators of Well Being, 2008 Child Stats-gov 2008*
- *State of Regulations for Child Care Centers in Texas TX Childcare regulations07*

### ECONOMICS

- *Lubbock Economic Index COL-LEI June 2nd Qtr 2009*
- *U.S. Department of Health and Human Services 2009 Poverty Guidelines*

### EDUCATION

- *Texas Primary Reading Inventory TPRI*
- *Transforming Dropout Prevention Policy and Practice ICF Dropout Report 09*
- *Are They Really Ready To Work? Are\_They\_Really\_Ready\_to\_Work*
- *What is the Value of an Education? Value of education Cantu*
- *Facing the Facts: A Literacy Forecast For Texas Literacy forecast.TX*
- *The ABCD's of Texas Education: Assessing the Benefits and Costs of Reducing the Dropout Rate*

### HEALTH

- *Selected Health Facts 2005 Public Health Region 1 PHR01\_05*
- *Selected Health Facts 2005 Lubbock County dshsLubbock05*
- *Texas Teen Births Fact Sheet 2005 Statewide teen births 2005*
- *Texas Teen Births Health Service Region 1 Region 1 teen births 2005*
- *Sexually Transmitted Diseases in Texas, 2006 STD06*
- *Leading Health Indicators for the State of Texas DSHS\_Fonseca\_leadingHealthIndicators excerpt*
- *Study of Lubbock Natality Concerns Wang PreNatal Study 04*

### SAFETY/CRIME

- *The PEW Center on the States One in 31: The Long Reach of American Corrections PSPP\_1in31\_report\_FINAL\_WEB\_3-26-09. PSPP\_1in31\_factsheet\_TX*
- *National Criminal Justice Commission Act of 2009: The Scope of the Problem SlidesCriminalJusticeBill*
- *Annual Report of 2008 UCR Data Collection: Crime in Texas 2008 Overview 2008 TX Crime data*



# SPECIAL THANKS TO OUR COMMUNITY STATUS REPORT PARTNERS



TEXAS TECH UNIVERSITY  
HEALTH SCIENCES CENTER



Lubbock Area United Way

**LIVE UNITED**™

1655 Main Street, Suite 101  
Lubbock, TX 79401  
tel 806.747.2711  
fax 806.747.2716